



CLDN 18.2-targeted CAR-T cell therapy (CT041) in patients with cancers of the digestive system

September 2021

THIS DOCUMENT IS FOR INFORMATIONAL PURPOSES ONLY AND IS NOT INTENDED TO BE, AND SHALL NOT BE CONSTRUED AS, AN OFFER, INDUCEMENT, INVITATION, SOLICITATION, COMMITMENT OR ADVERTISEMENT WITH RESPECT TO THE PURCHASE, SUBSCRIPTION OR SALE OF ANY SECURITY AND NO PART OF IT SHALL FORM THE BASIS OF, OR BE RELIED UPON IN CONNECTION WITH, ANY CONTRACT OR COMMITMENT WHATSOEVER.

This document is strictly confidential, not for public dissemination and is for the exclusive use of persons who are authorized to receive this document. This document is made available by CARsgen Therapeutics Holdings Limited (the "Company") solely for use at the Company's 2021 Interim Results Presentation. The recipient agrees to keep the contents of the document confidential and must not reproduce or distribute the document, in whole or in part, to any person in any manner whatsoever, without the prior written consent of the Company.

Unless otherwise indicated, the information used in preparing the document was prepared by the Company or from public sources and has not been independently verified by any person. This document is for discussion purposes only and has not been prepared with a view toward public disclosure under applicable securities laws or otherwise. The contents of this document are subject to corrections or changes at any time without further notice and will not be updated to reflect material developments which may occur after the date of this document. No representation or warranty, express or implied, is made as to the fairness, accuracy, completeness or correctness of such information and nothing contained herein is, or shall be relied upon as, a representation, whether as to the past, the present or the future. None of the Company, its affiliates, directors, officers, employees, advisers, agents or representatives or any other person shall have any liability whatsoever (in negligence or otherwise) for any loss howsoever arising from any use of the contents of this document or otherwise arising connection therewith.

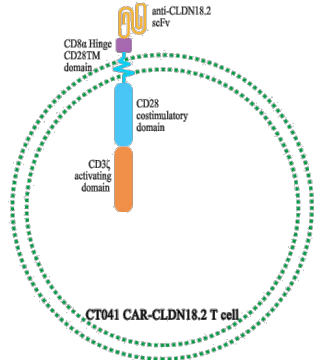
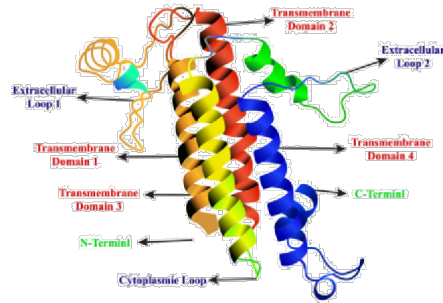
This document is not intended to provide the basis for evaluating, and should not be considered a recommendation with respect to, any transaction or other matter. Any analyses included herein are not and do not purport to be appraisals of the assets or business of the Company or any of its subsidiaries or affiliates. Nothing in this document should be construed as regulatory, valuation, legal, tax, accounting or investment advice. Before you enter into any transaction, you should ensure that you will be responsible for conducting your own due diligence investigation with respect to the Company and fully understand the potential risks and rewards of that transaction and you should consult with such advisers as you deem necessary to assist you in making these determinations, including, but not limited to, your accountants, investment advisors and legal and/or tax experts. Any decision to purchase securities of the Company in any public or private offering should be made solely on the basis of the prospectus and/or international offering circular to be prepared by the Company in relation to any such contemplated offering together with any supplementary pricing information. This document contains no information or material which may result in it being deemed (1) to be a prospectus within the meaning of section 2(1) Companies (Winding Up and Miscellaneous Provisions) Ordinance (Chapter 32 of the Laws of Hong Kong) (the "Companies Ordinance"), or an advertisement in relation to a prospectus or proposed prospectus or extract from or abridged version of a prospectus within the meaning of section 38B of the Companies Ordinance or an advertisement, invitation or document containing an advertisement or invitation falling within the meaning of section 103 of the Securities and Futures Ordinance (Chapter 571 of the Laws of Hong Kong) (the "Securities and Futures Ordinance") or (2) in Hong Kong to have effected an offer to the public without compliance with the laws of Hong Kong or being able to invoke any exemption available under the laws of Hong Kong, and is subject to material change without notice.

This document contains forward-looking statements that express the Company's current views, projections, beliefs and expectations with respect to future events as of the respective dates indicated herein. Such forward-looking statements are based on a number of assumptions and factors beyond the Company's control. As a result, they are subject to significant risks and uncertainties and actual events or results may differ materially from these forward-looking statements and the forward-looking events discussed in this document might not occur. No representation or warranty is given as to the achievement or reasonableness of, and no reliance should be placed on, any projections, targets, estimates or forecasts contained in this document.

This document is not an offer for sale of or a solicitation of an offer to buy securities in the United States or in any other jurisdiction. Securities may not be offered or sold in the United States absent registration or an available exemption from registration under the U.S. Securities Act of 1933, as amended (the "U.S. Securities Act").

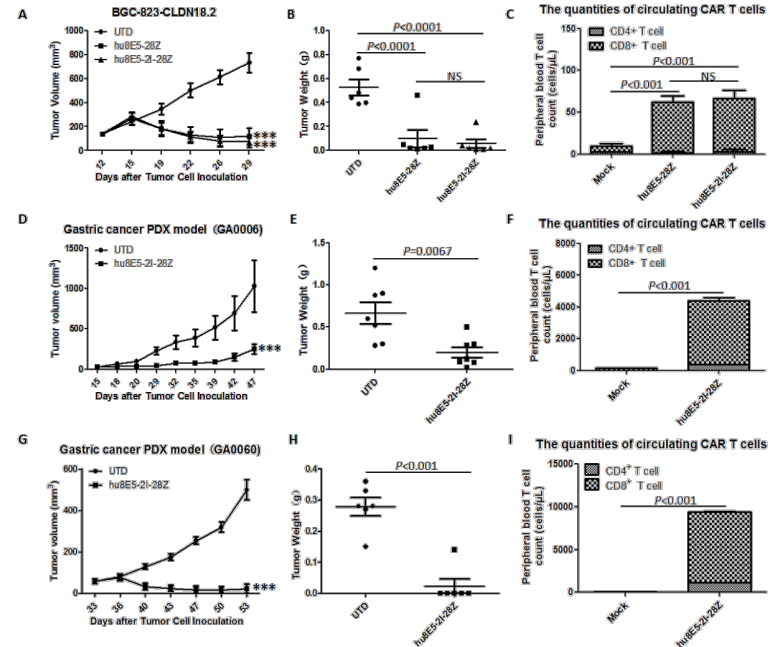
By reading this document and attending the presentation, you agree to be bound by the foregoing restrictions, and you shall be deemed to have represented to us that you (and any customers you represent) are either (a) a qualified institutional buyer (as defined in Rule 144A under the U.S. Securities Act) or (b) outside the United States (within the meaning of Regulation S under the U.S. Securities Act). You also represent that you (and any customers you represent) are "professional investors" described in Part I of Schedule 1 to the Securities and Futures Ordinance and any subsidiary legislation thereunder (including but not limited to the Securities and Futures (Professional Investor) Rules (Chapter 571D of the Laws of Hong Kong)).

- ❖ Claudin18.2 (CLDN18.2) a pan-cancer target
- ❖ Expressed in a diverse variety of epithelial tumor types¹
- ❖ Medium to high expression in ~60% GC/GEJ patients^{2,3}

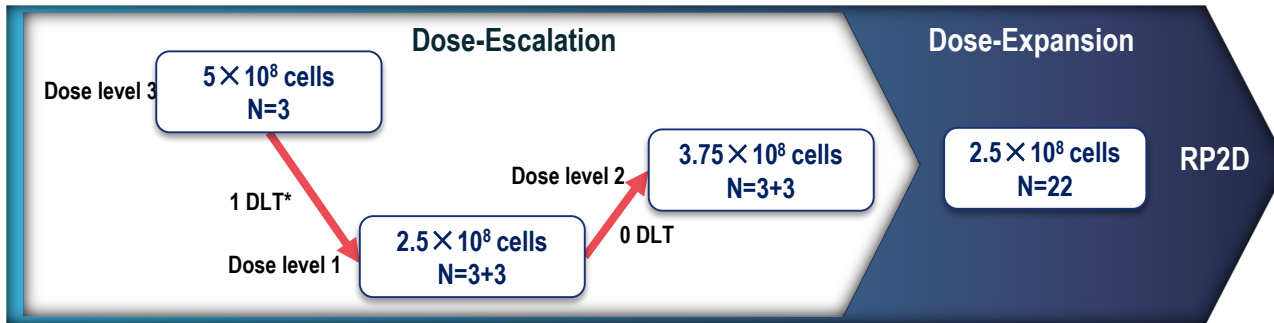
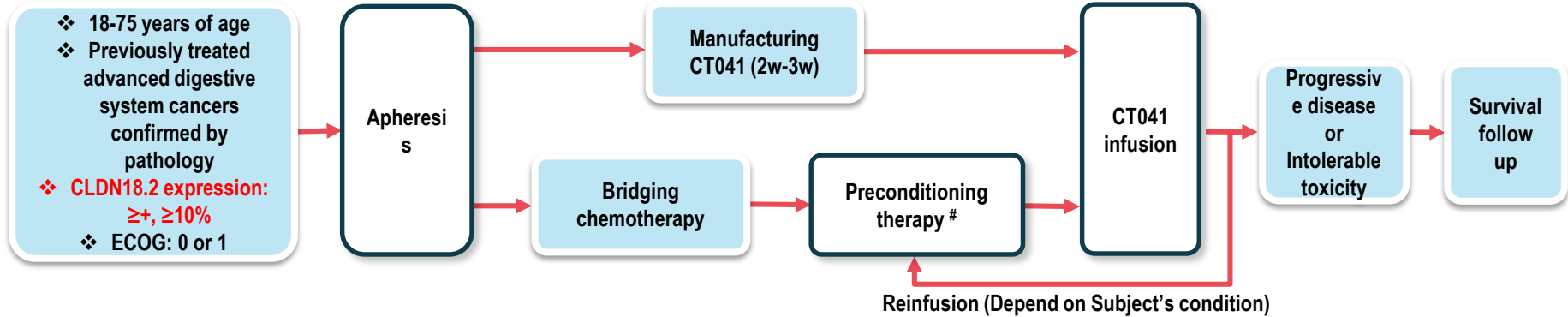


- ❖ Patient-derived (autologous) CAR T cell product
- ❖ Chimeric antigen receptor design:
 - Humanized CLDN18.2 scFV
 - CD8α hinge region, CD28 transmembrane region
 - CD28 intracellular signal domain
 - CD3ζ intracellular signal region
- ❖ IND clearance by China NMPA and US FDA
- ❖ Received orphan drug designation from FDA, EMA

Potent antitumor activities of CT041 in NOD/SCID mouse models bearing gastric cancer xenografts³



1. Singh et al. JHO, 2017; 10:105.
2. Sahin U, et al. CCR 2008;14:7624-34.
3. Jiang H, et al. JNCI, 2019;111(4): DJY134.



Primary Objectives: Safety and tolerability

Secondary Objectives: Efficacy, Pharmacokinetics

Explorative Objectives: Covariate analysis for efficacy, biodistribution of CT041

#Fludarabine 25 mg/m²/day(D-4~D-3)+Cyclophosphamide 250 mg/m²/day (D-4~D-2)+Nab-paclitaxel 100mg or gemcitabine 1000mg (D-3)

*One patient suffered gastrointestinal hemorrhage in D51 after reinfusion, which was considered to be caused by obvious tumor regression. After discussion among the investigators, DMC and partners, it was decided to lower the dose to 2.5×10^8 cells.

Patient Demographics and Baseline Characteristics



Characteristics of all patients	Total (N = 37)
Median age (range), year	53.0 (25–74)
Disease Type, n(%)	
GC/GEJ	28 (75.7)
PC	5 (13.5)
Other	4 (10.8)
ECOG, n (%)	
0	2 (5.4)
1	35 (94.6)
Bridging therapy, n (%)	28(75.7)
Expression intensity and rate of CLDN 18.2 in tumor tissue, n (%)	
Low expression	5 (13.5)
Medium expression	13 (35.1)
High expression	19 (51.4)
Numbers of metastatic organs	
Median	3.0
Min, Max	1.0, 7.0
Median no. of previous lines, n (%)	
1	6 (16.2)
2	19 (51.4)
≥ 3	12 (32.4)

GC/GEJ: gastric carcinoma / gastroesophageal junction
 PC: pancreatic adenocarcinoma

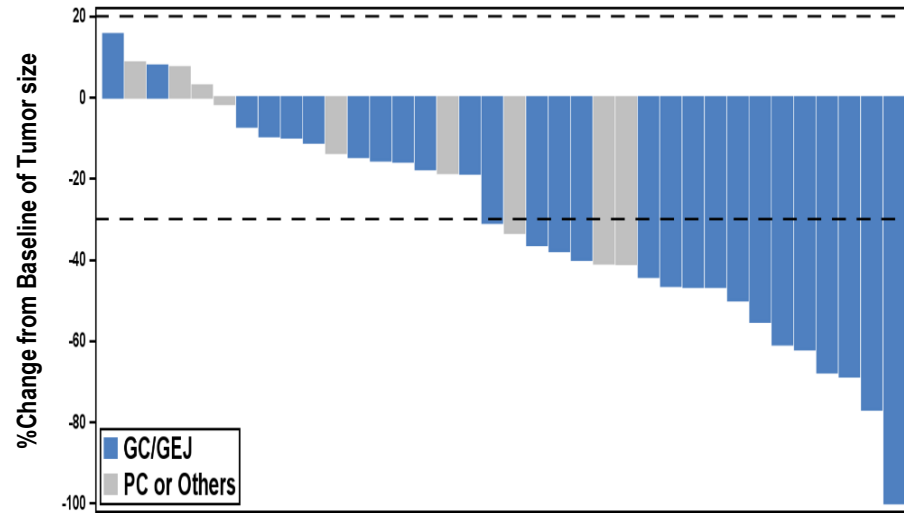
Characteristics of GC	Total (N = 28)
Histological classification(WHO classification), n (%)	
Mucinous adenocarcinoma	1 (3.6)
Signet ring cell carcinoma	12 (42.9)
Other	14 (50.0)
Expression intensity and rate of CLDN 18.2 in tumor tissue, n (%)	
Low expression	2 (7.1)
Medium expression	7 (25.0)
High expression	19 (67.9)
Numbers of metastatic organs	
Median	2.5
Min, Max	1.0, 7.0
Peritoneal metastases, n (%)	19 (67.9)
Liver metastases, n (%)	10 (35.7)
Lauren classification, n (%)	
Intestinal type	10 (35.7)
Diffuse type	9 (32.1)
Mixed type	7 (25.0)
Previous systemic therapies, n (%)	
Fluorouracil	28 (100)
Platinum	27 (96.4)
Taxanes	21 (75.0)
Paclitaxel	18 (64.3)
Albumin paclitaxel	7 (25.0)
Anti-PD-(L)1 antibody	12 (42.9)
Polykinase inhibitor	10 (35.7)

Overall well tolerated

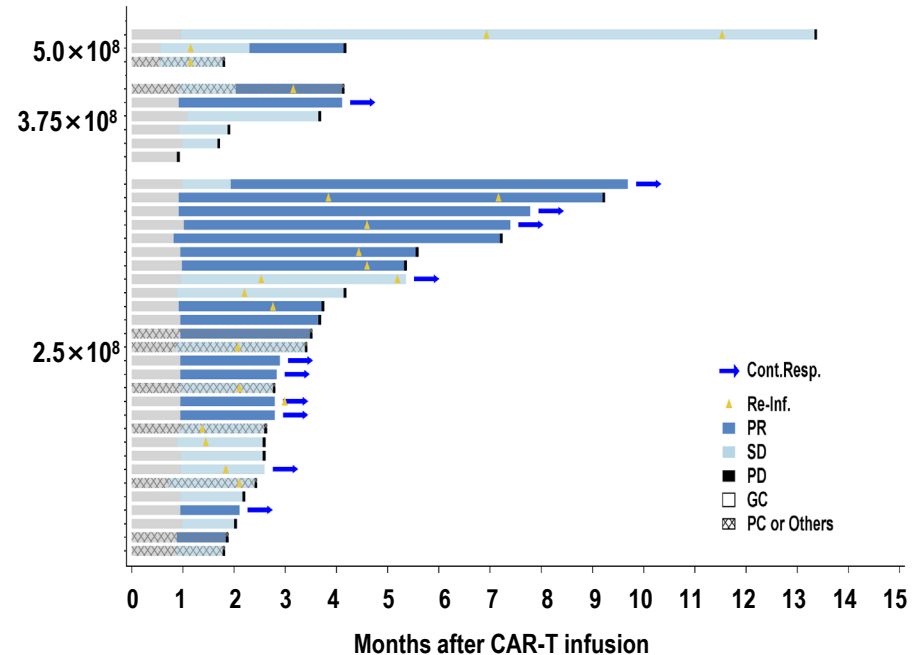
- ❖ Most common AEs \geq Grade 3 were hematologic toxicities and recovered within 2 weeks.
- ❖ 35 patients (94.5%) experienced Grade 1/2 CRS, No \geq Grade 3 CRS occurred.
- ❖ No CRRES / ICANS.
- ❖ 1 DLT of gastrointestinal hemorrhage post 2nd infusion at D51 resulted in dose reduction for further enrollment.
- ❖ 6 subjects reported mucosal injury with 1 at Grade 3.
- ❖ No obvious difference in safety profile among 3 dose levels.
- ❖ No treatment related death.

	Dose Escalation			Dose Expansion	Total (N=37)
	2.5x10 ⁸ (N=6)	3.75x10 ⁸ (N=6)	5x10 ⁸ (N=3)	2.5x10 ⁸ (N=22)	
ALL AEs	6 (100)	6 (100)	3 (100)	22 (100)	37 (100)
DLT	0	0	1 (33.3)	0	1 (2.7)
AE leading to study withdrawal	0	0	0	0	0
AE leading to drug withdrawal	0	0	1 (33.3)	0	1 (2.7)
AE leading to death	0	0	0	0	0
Treatment related SAE	0	0	1 (33.3)	2 (9.1)	3 (8.1)
Treatment related AEs	6 (100)	6 (100)	3 (100)	22 (100)	37 (100)
\geqGrade 3 fever	1 (16.7)	0	1 (33.3)	1 (4.5)	3 (8.1)
Grade 3	1 (16.7)	0	1 (33.3)	1 (4.5)	3 (8.1)
Grade 4	0	0	0	0	0
\geqGrade 3 hematological toxicity	6 (100)	6 (100)	3 (100)	22 (100)	37 (100)
Grade 3	6 (100)	6 (100)	3 (100)	22 (100)	37 (100)
Grade 4	5 (83.3)	6 (100)	3 (100)	21 (95.5)	35 (94.6)
CRS	5 (83.3)	6 (100)	3 (100)	21 (95.5)	35 (94.6)
Grade 1	2 (33.3)	4 (66.7)	0	11 (50.0)	17 (45.9)
Grade 2	3 (50.0)	2 (33.3)	3 (100)	10 (45.5)	18 (48.6)
\geqGrade 3 neurotoxicity	0	0	0	0	0
\geqGrade 3 infections	0	0	0	0	0
Gastric mucosal injury	0	0	0	6 (27.3)	6 (16.2)
\geqGrade 3	0	0	0	1 (4.5)	1 (2.7)

Thirty-six of the 37 subjects had target lesions. 31 subjects had different degrees of shrinkage of target lesions. According to RECIST 1.1, ORR and DCR reached **48.6%** (18/37) and **73.0%** (27/37) respectively.



GC/GEJ: gastric carcinoma / gastroesophageal junction
 PC: pancreatic adenocarcinoma

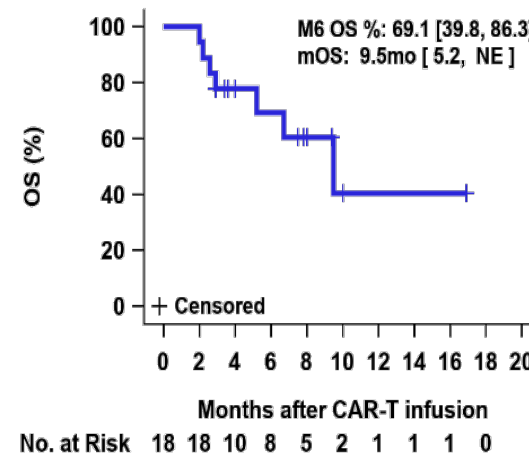
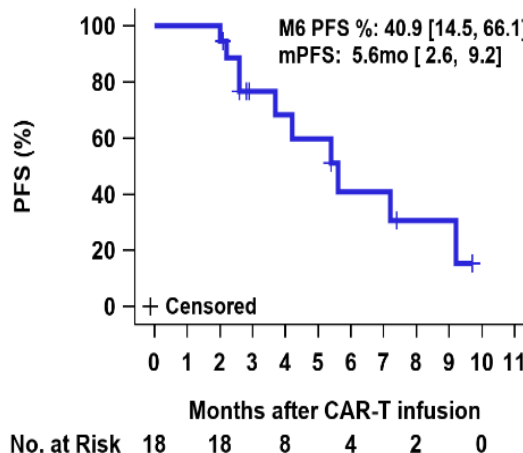


Efficacy : ≥ 2 prior lines GC/GEJ treated at RP2D



GC/GEJ patients who failed at least 2 prior lines of therapy (especially more than 40% patients ever exposed to an anti-PD-(L)1 antibody) at the dose of 2.5×10^8 CAR T cells achieved an ORR of **61.1%**, DCR of **83.3%**, mPFS* of **5.6m**, mDOR of **6.4m**, mOS* of **9.5m** with a median follow up duration* of 7.6m (95%CI 5.6, 8.6) .

≥ 2 lines GC patients at 2.5×10^8 cells (N=18)	
Best Overall Response	
CR	0
PR	11 (61.1%)
SD	4 (22.2%)
PD	3 (16.7%)
ORR [95% CI]	11 (61.1%) [35.75, 82.70]
DCR [95% CI]	15 (83.3%) [58.58, 96.42]
mPFS*	5.6m [2.6, 9.2]
mOS*	9.5m [5.2, NE]
mDOR	6.4m [2.7, NE]



*PFS, OS and follow up duration were calculated from CAR-T infusion date.

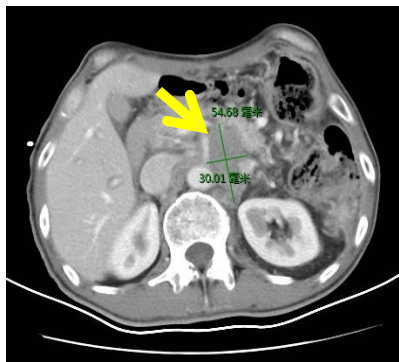
Subgroup Analysis of ORR in GC/GEJ Patients



	Number of subjects	ORR
CLDN18.2 expression		
High expression ($\geq 2+$, $\geq 70\%$)	19	57% (37.2, 75.5)
Medium expression ($\geq 2+$, $\geq 40\%$ and $< 70\%$)	7	58% (33.5, 79.7)
Low expression (+ or $< 40\%$)	2	50% (1.3, 98.7)
Anti-PD-(L)1 Antibody		
Not used	16	63% (35.4, 84.8)
Used	12	50% (21.1, 78.9)
Peritoneal Metastasis		
Yes	19	58% (33.5 , 79.7)
No	9	56% (21.2, 86.3)
WHO Classification		
Signet ring cell carcinoma	12	58% (27.7, 84.8)
Others	15	60% (32.3, 83.7)
Lauren Classification		
Intestinal	10	70% (34.8, 93.3)
Diffused / Mixed	16	50% (24.7, 75.3)

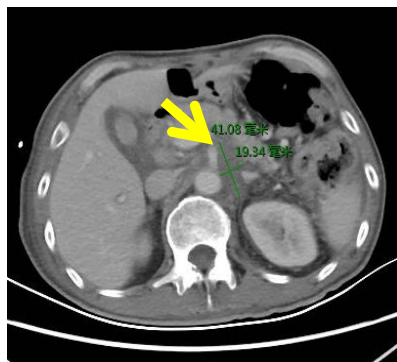
Pt04, 53/M, GC with liver, lung, bone metastasis and multiple lymph node and peritoneum metastasis, had received 2 prior lines of therapy including PD-1 antibody, achieved PR till 32 weeks, CLDN18.2 3+ 60%.

Retroperitoneal Lymph Node



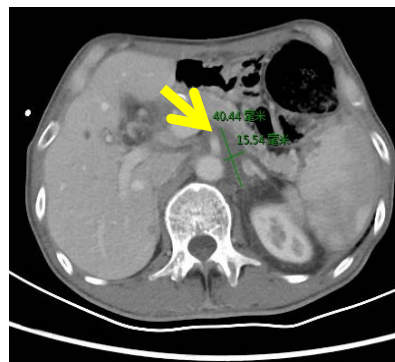
Pre-infusion

Short Axis 30mm



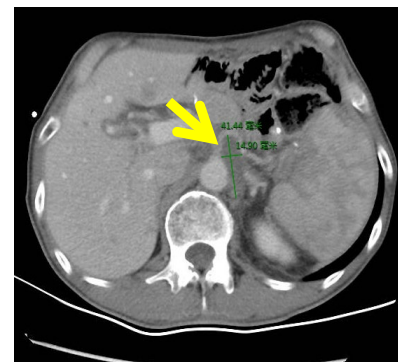
Post-infusion W4

19mm



W8

16mm

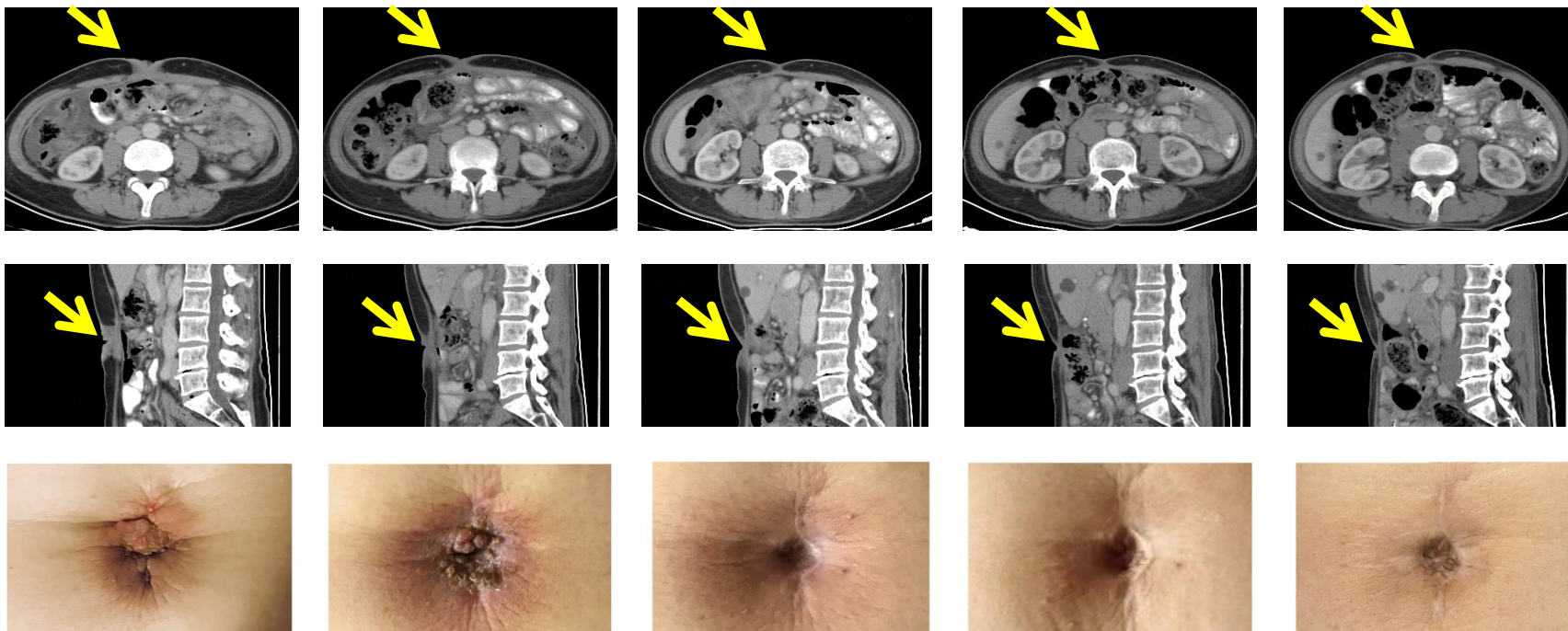


W32

15mm

Case Sharing : Long-term tumor response

Pt08, 57/F, GC with peritoneal metastasis and Sister Mary Joseph nodule, had received 3 prior lines of therapy including PD-1 antibody, achieved PR and ongoing response more than 56 weeks, CLDN18.2 2+ 80%.



Pre-infusion

Post-infusion W4

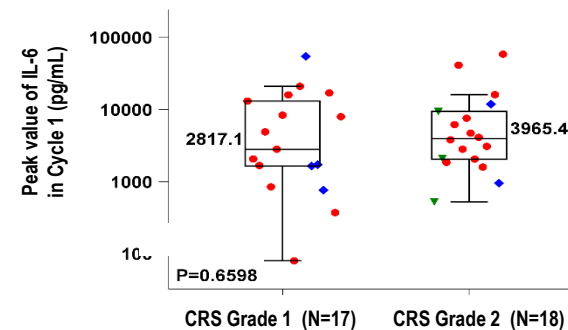
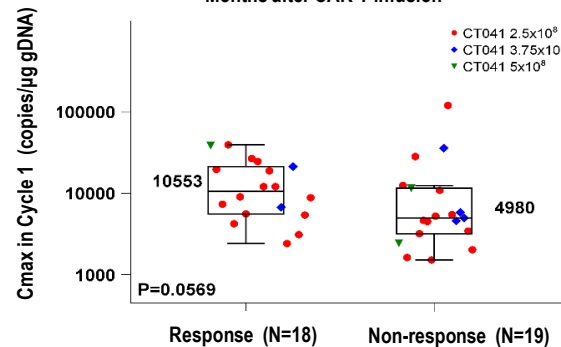
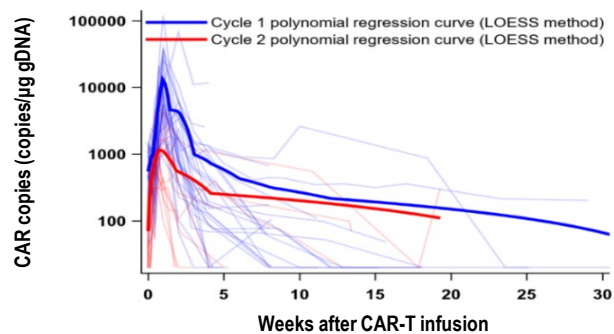
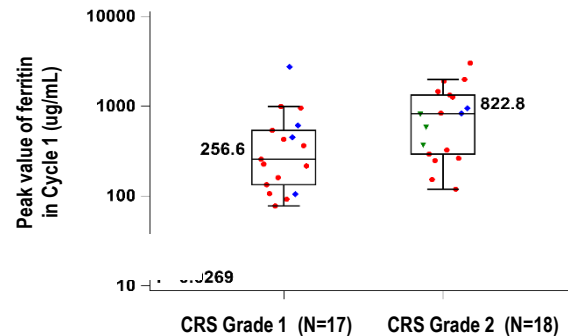
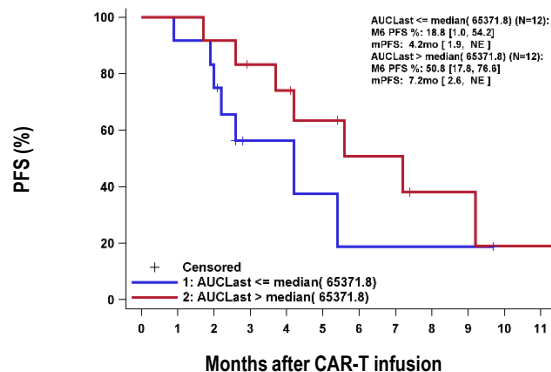
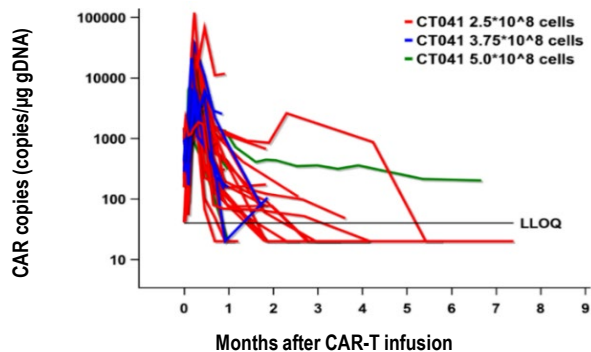
W12

W24

W40

CT041 CAR T-cell Expansion and Serum Biomarkers

- ❖ In average, the CAR copies peaked around Day 7 and persisted still Week 4, and CAR copies peak decreased post 2nd - 3rd dose ;
- ❖ Responders had relative higher CAR copies peak;
- ❖ The prolonged PFS positively correlated with increased AUC_{last} ;
- ❖ Patients with Grade 2 CRS had higher IL-6 and ferritin peak value than those with Grade 1.



Safety Summary

- ❖ No treatment-related death, DLT occurred in 28 days, and immune effector cell-associated neurotoxicity syndrome (ICANS) were reported;
- ❖ Grade 1 or Grade 2 CRS occurred in 94.6% subjects, no \geq Grade 3 CRS reported.

Efficacy Summary

- ❖ The ORR for all patients was 48.6%, and DCR reached 73%. The mOS and mDOR have not reached;
- ❖ GC/GEJ patients who failed at least 2 prior lines of therapy (especially more than 40% patients ever exposed to anti-PD-(L)1 antibody) at a dose of 2.5×10^8 CAR T cells achieved ORR of **61.1%**, DCR of **83.3%**, mPFS of **5.6** months (95%CI, 2.6 9.2), mOS of **9.5** months (95%CI, 5.2, NE);

Pharmacokinetics characteristics

- ❖ The CAR copies peaked around 7 days, median persistent duration of one month
- ❖ The CAR copies peak was significantly higher in the responders than in the nonresponders. The prolonged PFS positively correlated with increased AUC_{last} .

CT041 at dose levels of $2.5-5.0 \times 10^8$ CAR-T cells was well tolerated in patients with CLDN18.2 positive digestive system cancers and delivers high response rate and sustained remission in the previously treated GC/GEJ patients.

Thanks

